

Free Spirit

Wiggle Room Quilt

Featuring HomeMade by Tula Pink

Quilters always wish there was a little more wiggle room in their projects! Make this strip pieced quilt from this beautiful HomeMade collection.

Collection:	HomeMade by Tula Pink
Technique:	Piecing
Skill Level:	Confident Beginner
Finished Size:	62" x 72" (157.48cm x 182.88cm)

All possible care has been taken to assure the accuracy of this pattern. We are not responsible for printing errors or the manner in which individual work varies. Please read the instructions carefully before starting this project. If kitting it is recommended a sample is made to confirm accuracy.

Project designed by Stacey Day | Tech edited by Alison M. Schmidt

Fabric Requirements

Two HomeMade design rolls can be used for this pattern.

Additional yardage has been added to **Fabric C** to allow fussy cutting.

DESIGN	COLOR	ARTICLE CODE	YARDAGE
(A) Pedal to the Metal	Morning	PWTP140.MORNING	¼ yard (0.23m)
(B) Pedal to the Metal	Noon	PWTP140.NOON	¼ yard (0.23m)
(C) Pedal to the Metal	Night	PWTP140.NIGHT	1½ yards (1.49m)
(D) Getting Snippy	Morning	PWTP141.MORNING	¼ yard (0.23m)
(E) Getting Snippy	Noon	PWTP141.NOON	¼ yard (0.23m)
(F) Getting Snippy	Night	PWTP141.NIGHT	¼ yard (0.23m)
(G) Getting Snippy	Brunch	PWTP141.BRUNCH	¼ yard (0.23m)
(H) Measure Twice	Morning	PWTP142.MORNING	¼ yard (0.23m)
(I) Measure Twice	Noon	PWTP142.NOON	¼ yard (0.23m)
(J) Measure Twice	Night	PWTP142.NIGHT	¼ yard (0.23m)
(K) Tools of the Trade	Morning	PWTP143.MORNING	¼ yard (0.23m)
(L) Tools of the Trade	Noon	PWTP143.NOON	¼ yard (0.23m)
(M) Tools of the Trade	Night	PWTP143.NIGHT	¼ yard (0.23m)
(N) Busy Fingers	Morning	PWTP144.MORNING	¼ yard (0.23m)
(O) Busy Fingers	Noon	PWTP144.NOON	¼ yard (0.23m)
(P) Busy Fingers	Night	PWTP144.NIGHT	¼ yard (0.23m)
(Q) Pins & Needles	Morning	PWTP145.MORNING	¼ yard (0.23m)
(R) Pins & Needles	Noon	PWTP145.NOON	¼ yard (0.23m)
(S) Pins & Needles	Night	PWTP145.NIGHT	¼ yard (0.23m)
(T) Cut Once	Morning	PWTP146.MORNING	¼ yard (0.23m)
(U) Cut Once	Noon	PWTP146.NOON	¼ yard (0.23m)
(V) Cut Once	Night	PWTP146.NIGHT	¼ yard (0.23m)
(W) Seed Stitch	Morning	PWTP147.MORNING	¼ yard (0.23m)
(X) Seed Stitch	Noon	PWTP147.NOON	¼ yard (0.23m)
(Y) Seed Stitch	Night	PWTP147.NIGHT	¼ yard (0.23m)
(Z) Tent Stripe	Iris	PWTP069.IRIS*	5⁄8 yard (0.57m)

* binding

Backing (Purchased Separately)

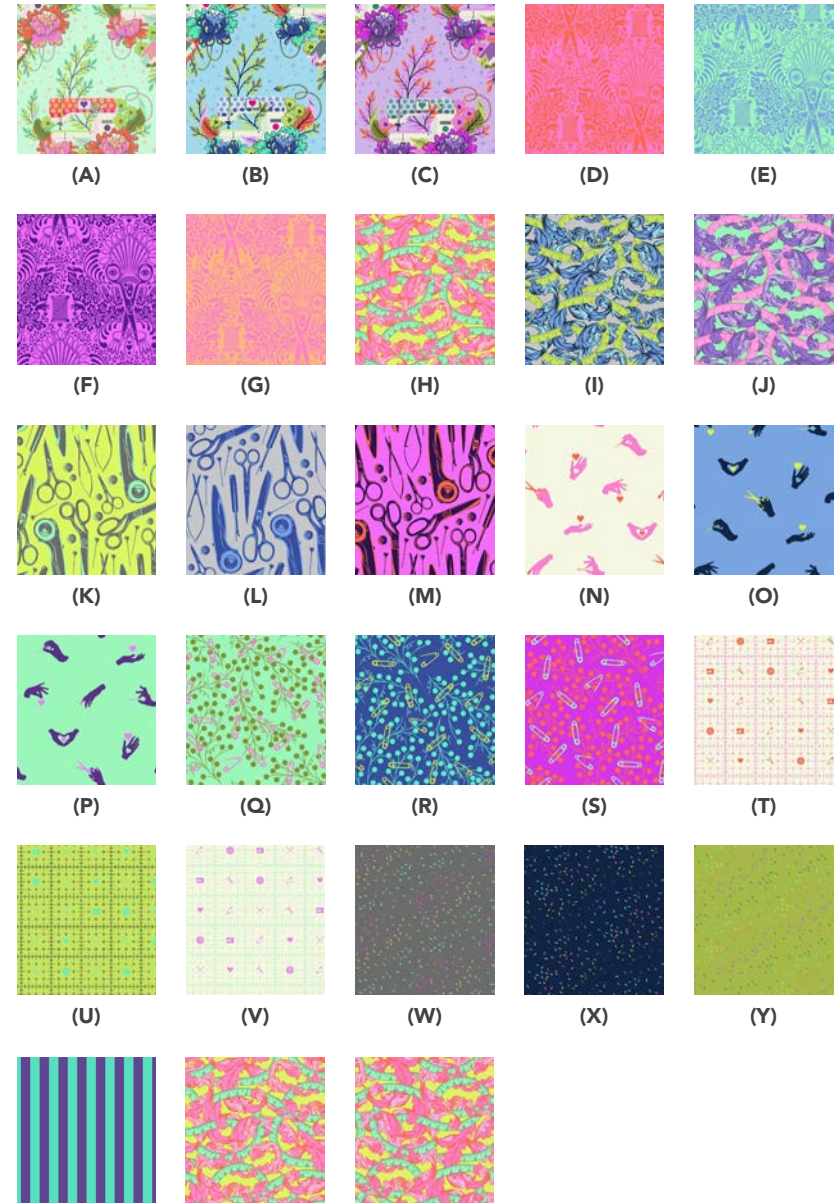
44" (111.76cm) wide

Measure Twice Morning PWTP142.MORNING 4½ yards (3.7m)

OR

108" (274.32cm) wide

Measure Twice Morning QBTP004.MORNING 2½ yards (1.94m)



(Z)

Backing
44"
(111.76cm)

Backing
108"
(274.32cm)

Additional Requirements

- Aurifil HomeMade by Tula Pink thread kit 50wt cotton
- 70" x 80" (177.80cm x 203.20cm) batting

Cutting

WOF = Width of Fabric, yardage is based on 40" usable width.

From Fabric A, F, M, Q, and W, cut:

- (2) 2½" x WOF (6.35cm x WOF); subcut:
 - (6) 2½" x 9½" (6.35cm x 24.13cm)
 - (2) 2½" x 8½" (6.35cm x 21.59cm)
 - (2) 2½" x 1½" (6.35cm x 3.81cm)

From Fabric B, G, I, and K cut:

- (2) 2½" x WOF (6.35cm x WOF); subcut:
 - (4) 2½" x 9½" (6.35cm x 24.13cm)
 - (2) 2½" x 6½" (6.35cm x 16.51cm)
 - (2) 2½" x 5½" (6.35cm x 13.97cm)
 - (2) 2½" x 4½" (6.35cm x 11.43cm)
 - (2) 2½" x 3½" (6.35cm x 8.89cm)

From Fabric C, cut:

(8) 18½" x 5½" (46.99cm x 13.97cm) rectangles, fussy cut with the motif centered in the rectangle (**Fig. 1** shown right)

- (2) 2½" x WOF (6.35cm x WOF); subcut:
 - (4) 2½" x 9½" (6.35cm x 24.13cm)
 - (2) 2½" x 7½" (6.35cm x 19.05cm)
 - (2) 2½" x 6½" (6.35cm x 16.51cm)
 - (2) 2½" x 3½" (6.35cm x 8.89cm)
 - (2) 2½" x 2½" (6.35cm x 6.35cm)

From Fabric D, E, O, and U, cut:

- (2) 2½" x WOF (6.35cm x WOF); subcut:
 - (4) 2½" x 9½" (6.35cm x 24.13cm)
 - (2) 2½" x 7½" (6.35cm x 19.05cm)
 - (2) 2½" x 6½" (6.35cm x 16.51cm)
 - (2) 2½" x 3½" (6.35cm x 8.89cm)
 - (2) 2½" x 2½" (6.35cm x 6.35cm)

From Fabric H and L, cut:

- (2) 2½" x WOF (6.35cm x WOF); subcut:
 - (4) 2½" x 9½" (6.35cm x 24.13cm)
 - (4) 2½" x 5½" (6.35cm x 13.97cm)
 - (4) 2½" x 4½" (6.35cm x 11.43cm)

From Fabric J, P, R, S, T, and Y, cut:

- (2) 2½" x WOF (6.35cm x WOF); subcut:
 - (4) 2½" x 9½" (6.35cm x 24.13cm)
 - (2) 2½" x 8½" (6.35cm x 21.59cm)
 - (2) 2½" x 7½" (6.35cm x 19.05cm)
 - (2) 2½" x 2½" (6.35cm x 6.35cm)
 - (2) 2½" x 1½" (6.35cm x 3.81cm)

From Fabric N, cut:

- (3) 2½" x WOF (6.35cm x WOF); subcut:
 - (6) 2½" x 9½" (6.35cm x 24.13cm)
 - (4) 2½" x 7½" (6.35cm x 19.05cm)
 - (2) 2½" x 6½" (6.35cm x 16.51cm)
 - (2) 2½" x 3½" (6.35cm x 8.89cm)
 - (4) 2½" x 2½" (6.35cm x 6.35cm)

From Fabric V, cut:

- (2) 2½" x WOF (6.35cm x WOF); subcut:
 - (8) 2½" x 9½" (6.35cm x 24.13cm)

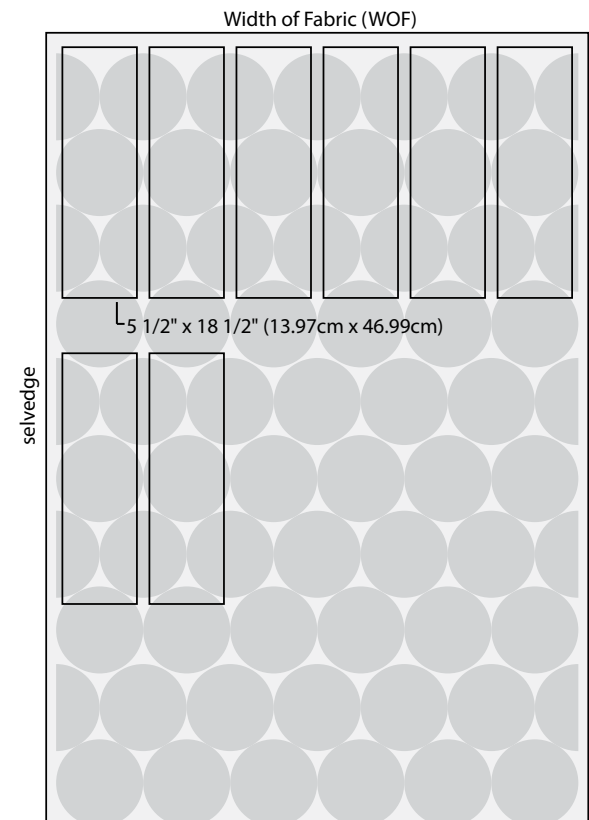
From Fabric X, cut:

- (3) 2½" x WOF (6.35cm x WOF); subcut:
 - (4) 2½" x 9½" (6.35cm x 24.13cm)
 - (4) 2½" x 6½" (6.35cm x 16.51cm)
 - (4) 2½" x 5½" (6.35cm x 13.97cm)
 - (4) 2½" x 4½" (6.35cm x 11.43cm)
 - (4) 2½" x 3½" (6.35cm x 8.89cm)

From Fabric Z, cut:

Cut sufficient 2½" bias strips to sew together to make 300" of bias binding.

Fig. 1

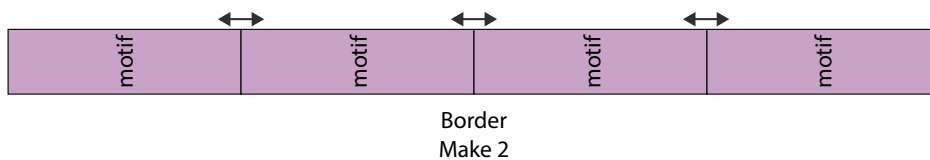


Sewing

Note: All seam allowances are $\frac{1}{4}$ " (0.64cm). Pieces are sewn right sides together. Press all seams open unless otherwise indicated.

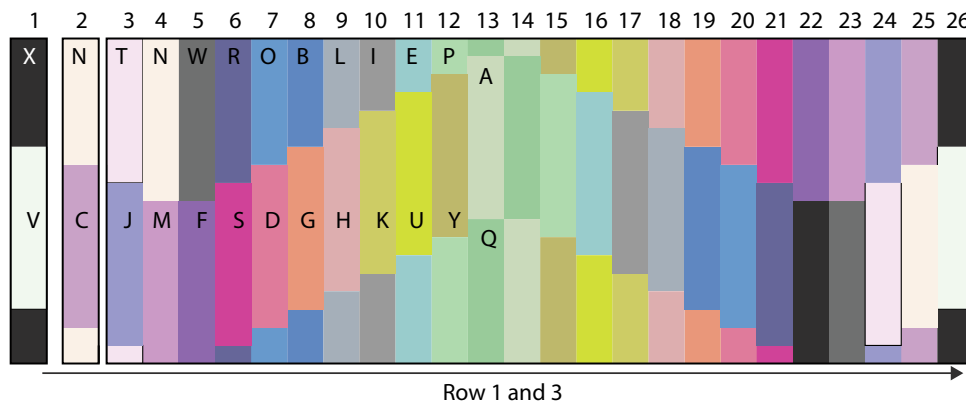
1. Sew (4) fussy-cut **Fabric C** $5\frac{1}{2}$ " x $18\frac{1}{2}$ " (13.97cm x 46.99cm) rectangles together end to end, with the motifs oriented in the same direction, to make a border $5\frac{1}{2}$ " x $62\frac{1}{2}$ " (13.97cm x 157.48cm). Repeat with the remaining **Fabric C** rectangles to make (2) Borders total. Set aside. (**Fig. 2**)

Fig. 2



3. Sew (1) of each column together in numerical order, long edge to long edge, to make Row 1 as shown. Repeat with the remaining columns to make Row 3. Press all seam allowances from left to right. Each row should be $52\frac{1}{2}$ " (133.35cm) wide. (**Fig. 3**)

Fig. 3



Rows 1 and 3

2. Following the table shown at right and **Fig. 3** below, make (2) of each column, sewing Piece 2 to the bottom of Piece 1, short ends together, and then Piece 3 to the bottom of Piece 2. Note Columns 4, 5, 22, and 23 are only 2 pieces each. Label with the column number and set aside in order as you sew. Each finished column measures $2\frac{1}{2}$ " x $18\frac{1}{2}$ " (6.35cm x 46.99cm).

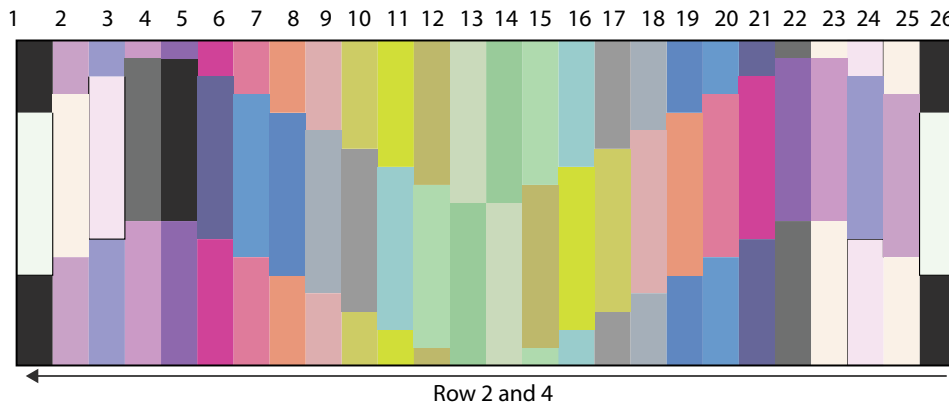
Column	Piece 1 (top) $2\frac{1}{2}$ " (6.35cm) x size listed	Piece 2 (middle) $2\frac{1}{2}$ " x $9\frac{1}{2}$ " (6.35cm x 24.13cm)	Piece 3 (bottom) $2\frac{1}{2}$ " (6.35cm) x size listed
1	$6\frac{1}{2}$ " (16.51cm) Fabric X	Fabric V	$3\frac{1}{2}$ " (8.89cm) Fabric X
2	$7\frac{1}{2}$ " (19.05cm) Fabric N	Fabric C	$2\frac{1}{2}$ " (6.35cm) Fabric N
3	$8\frac{1}{2}$ " (21.59cm) Fabric T	Fabric J	$1\frac{1}{2}$ " (3.81cm) Fabric T
4	$9\frac{1}{2}$ " (24.13cm) Fabric N	Fabric M	-
5	$9\frac{1}{2}$ " (24.13cm) Fabric W	Fabric F	-
6	$8\frac{1}{2}$ " (21.59cm) Fabric R	Fabric S	$1\frac{1}{2}$ " (3.81cm) Fabric R
7	$7\frac{1}{2}$ " (19.05cm) Fabric O	Fabric D	$2\frac{1}{2}$ " (6.35cm) Fabric O
8	$6\frac{1}{2}$ " (16.51cm) Fabric B	Fabric G	$3\frac{1}{2}$ " (8.89cm) Fabric B
9	$5\frac{1}{2}$ " (13.97cm) Fabric L	Fabric H	$4\frac{1}{2}$ " (11.43cm) Fabric L
10	$4\frac{1}{2}$ " (11.43cm) Fabric I	Fabric K	$5\frac{1}{2}$ " (13.97cm) Fabric I
11	$3\frac{1}{2}$ " (8.89cm) Fabric E	Fabric U	$6\frac{1}{2}$ " (16.51cm) Fabric E
12	$2\frac{1}{2}$ " (6.35cm) Fabric P	Fabric Y	$7\frac{1}{2}$ " (19.05cm) Fabric P
13	$1\frac{1}{2}$ " (3.81cm) Fabric Q	Fabric A	$8\frac{1}{2}$ " (21.59cm) Fabric Q
14	$1\frac{1}{2}$ " (3.81cm) Fabric A	Fabric Q	$8\frac{1}{2}$ " (21.59cm) Fabric A
15	$2\frac{1}{2}$ " (6.35cm) Fabric Y	Fabric P	$7\frac{1}{2}$ " (19.05cm) Fabric Y
16	$3\frac{1}{2}$ " (8.89cm) Fabric U	Fabric E	$6\frac{1}{2}$ " (16.51cm) Fabric U
17	$4\frac{1}{2}$ " (11.43cm) Fabric K	Fabric I	$5\frac{1}{2}$ " (13.97cm) Fabric K
18	$5\frac{1}{2}$ " (13.97cm) Fabric H	Fabric L	$4\frac{1}{2}$ " (11.43cm) Fabric H
19	$6\frac{1}{2}$ " (16.51cm) Fabric G	Fabric B	$3\frac{1}{2}$ " (8.89cm) Fabric G
20	$7\frac{1}{2}$ " (19.05cm) Fabric D	Fabric O	$2\frac{1}{2}$ " (6.35cm) Fabric D
21	$8\frac{1}{2}$ " (21.59cm) Fabric S	Fabric R	$1\frac{1}{2}$ " (3.81cm) Fabric S
22	$9\frac{1}{2}$ " (24.13cm) Fabric F	Fabric X	-
23	$9\frac{1}{2}$ " (24.13cm) Fabric M	Fabric W	-
24	$8\frac{1}{2}$ " (21.59cm) Fabric J	Fabric T	$1\frac{1}{2}$ " (3.81cm) Fabric J
25	$7\frac{1}{2}$ " (19.05cm) Fabric C	Fabric N	$2\frac{1}{2}$ " (6.35cm) Fabric C
26	$6\frac{1}{2}$ " (16.51cm) Fabric X	Fabric V	$3\frac{1}{2}$ " (8.89cm) Fabric X

Rows 2 and 4

4. Following the table shown at right and, make (2) of each column, sewing Piece 2 to the bottom of Piece 1, short ends together, and then Piece 3 to the bottom of Piece 2. Note Columns 13 and 14 are only 2 pieces each. Label with the column number and set aside in order as you sew. Each finished column measures $2\frac{1}{2}" \times 18\frac{1}{2}"$ (6.35cm x 46.99cm).

5. Sew (1) of each column together in numerical order, long edge to long edge, to make Row 2 as shown. Repeat with the remaining columns to make Row 4. Press all seam allowances from right to left (opposite the odd rows). Each row should be $52\frac{1}{2}"$ (133.35cm) wide. **(Fig. 4)**

Fig. 4



Column	Piece 1 (top) $2\frac{1}{2}"$ (6.35cm) x size listed	Piece 2 (middle) $2\frac{1}{2}" \times 9\frac{1}{2}"$ (6.35cm x 24.13cm)	Piece 3 (bottom) $2\frac{1}{2}"$ (6.35cm) x size listed
1	$4\frac{1}{2}"$ (11.43cm) Fabric X	Fabric V	$5\frac{1}{2}"$ (13.97cm) Fabric X
2	$3\frac{1}{2}"$ (8.89cm) Fabric C	Fabric N	$6\frac{1}{2}"$ (16.51cm) Fabric C
3	$2\frac{1}{2}"$ (6.35cm) Fabric J	Fabric T	$7\frac{1}{2}"$ (19.05cm) Fabric J
4	$1\frac{1}{2}"$ (3.81cm) Fabric M	Fabric W	$8\frac{1}{2}"$ (21.59cm) Fabric M
5	$1\frac{1}{2}"$ (3.81cm) Fabric F	Fabric X	$8\frac{1}{2}"$ (21.59cm) Fabric F
6	$2\frac{1}{2}"$ (6.35cm) Fabric S	Fabric R	$7\frac{1}{2}"$ (19.05cm) Fabric S
7	$3\frac{1}{2}"$ (8.89cm) Fabric D	Fabric O	$6\frac{1}{2}"$ (16.51cm) Fabric D
8	$4\frac{1}{2}"$ (11.43cm) Fabric G	Fabric B	$5\frac{1}{2}"$ (13.97cm) Fabric G
9	$5\frac{1}{2}"$ (13.97cm) Fabric H	Fabric L	$4\frac{1}{2}"$ (11.43cm) Fabric H
10	$6\frac{1}{2}"$ (16.51cm) Fabric K	Fabric I	$3\frac{1}{2}"$ (8.89cm) Fabric K
11	$7\frac{1}{2}"$ (19.05cm) Fabric U	Fabric E	$2\frac{1}{2}"$ (6.35cm) Fabric U
12	$8\frac{1}{2}"$ (21.59cm) Fabric Y	Fabric P	$1\frac{1}{2}"$ (3.81cm) Fabric Y
13	$9\frac{1}{2}"$ (24.13cm) Fabric A	Fabric Q	-
14	$9\frac{1}{2}"$ (24.13cm) Fabric Q	Fabric A	-
15	$8\frac{1}{2}"$ (21.59cm) Fabric P	Fabric Y	$1\frac{1}{2}"$ (3.81cm) Fabric P
16	$7\frac{1}{2}"$ (19.05cm) Fabric E	Fabric U	$2\frac{1}{2}"$ (6.35cm) Fabric E
17	$6\frac{1}{2}"$ (16.51cm) Fabric I	Fabric K	$3\frac{1}{2}"$ (8.89cm) Fabric I
18	$5\frac{1}{2}"$ (13.97cm) Fabric L	Fabric H	$4\frac{1}{2}"$ (11.43cm) Fabric L
19	$4\frac{1}{2}"$ (11.43cm) Fabric B	Fabric G	$5\frac{1}{2}"$ (13.97cm) Fabric B
20	$3\frac{1}{2}"$ (8.89cm) Fabric O	Fabric D	$6\frac{1}{2}"$ (16.51cm) Fabric O
21	$2\frac{1}{2}"$ (6.35cm) Fabric R	Fabric S	$7\frac{1}{2}"$ (19.05cm) Fabric R
22	$1\frac{1}{2}"$ (3.81cm) Fabric W	Fabric F	$8\frac{1}{2}"$ (21.59cm) Fabric W
23	$1\frac{1}{2}"$ (3.81cm) Fabric N	Fabric M	$8\frac{1}{2}"$ (21.59cm) Fabric N
24	$2\frac{1}{2}"$ (6.35cm) Fabric T	Fabric J	$7\frac{1}{2}"$ (19.05cm) Fabric T
25	$3\frac{1}{2}"$ (8.89cm) Fabric N	Fabric C	$6\frac{1}{2}"$ (16.51cm) Fabric N
26	$4\frac{1}{2}"$ (11.43cm) Fabric X	Fabric V	$5\frac{1}{2}"$ (13.97cm) Fabric X

Quilt Top Assembly

Refer to **Figure 5** to assemble the quilt top.

6. Sew Rows 1-4 together in order, matching seams and paying close attention to the orientation of each row. Press the seams open.
7. Sew the Borders to either side, paying close attention to the direction of the motif for each. Press towards the borders.

Finishing

8. Layer the backing, batting, and quilt top; baste the layers together and quilt as desired.
9. Sew the bias strips end to end to make one continuous piece. Fold in half wrong sides together and press the length. Sew the binding to the quilt top, mitering the corners. Turn the binding to the back of the quilt and hand-stitch in place.

Fig. 5

